

XST6036TR 1.125 – COMPLIANT SHOWER

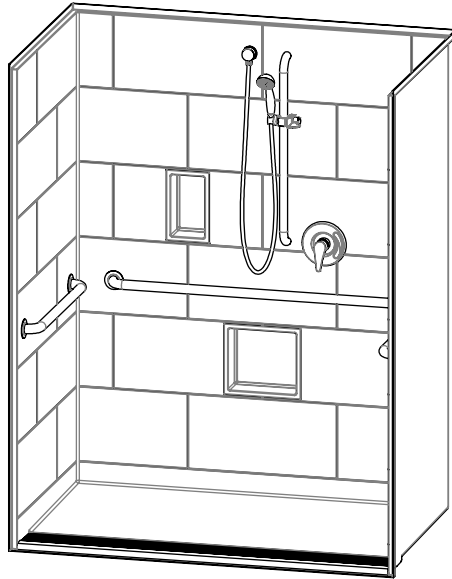
Without Seat

Interior: 60 x 36 x 76 5/8

Exterior: 62 1/4 x 38 1/8 x 78 3/4

inches

The XST6036TR1.125 roll-in shower features innovative installation design, including an engineered leveled base and improved front threshold with molded integral linear trench drain. A true time and money saver, our pre-leveled base lets you install directly on a **level** floor. And its front threshold is engineered to keep a constant level with the innovative nailing flange.



Shown fully-equipped

COLOR & TRIM OPTIONS

Stock	Upgraded
White	Biscuit Bone

**Additional custom colors available.
(Contact Customer Service)

FEATURES

- Pre-leveled base
- AcrylX™ applied acrylic surface
- 1 1/8" skirt
- Barrier free when properly installed
- Smooth subway tile wall
- Center front drain outlet
- Integral front trench drain
- 30-year warranty*

* See terms and conditions for details

OPTIONS

- Grab bars
- Hand-held shower assembly with slide bar
- Pressure balancing mixing valve
- Large soap dish
- Small soap dish
- Curtain rod and/or shower curtain, shipped loose

CODE COMPLIANCE

- ADA
- FHA
- HUD UM73a
- ANSI Z124.1.2
- CAN/CSA-B45-02

**Code compliant when fully equipped and installed according to guidelines.

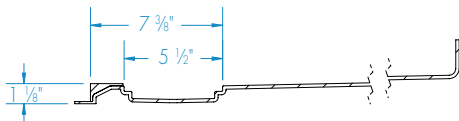
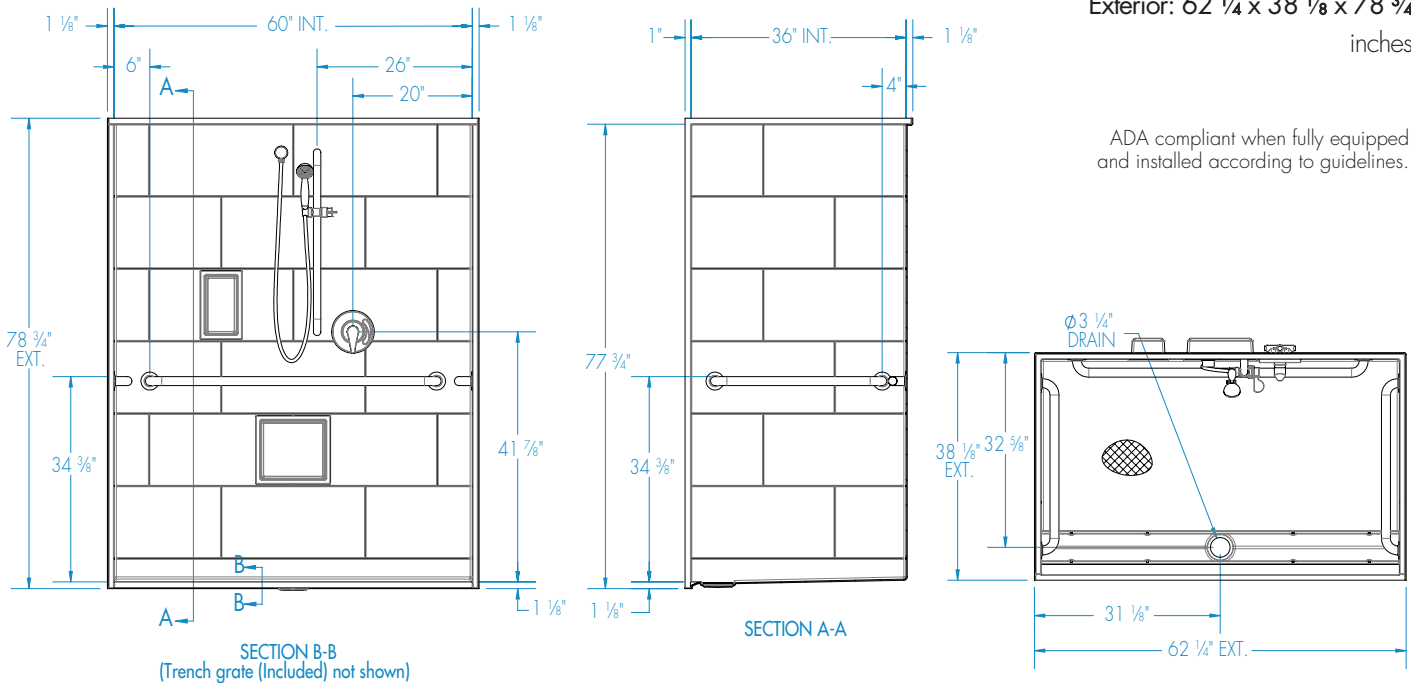
XST6036TR 1.125

Without Seat

Interior: 60 x 36 x 76 5/8

Exterior: 62 1/4 x 38 1/8 x 78 3/4
inches

ADA compliant when fully equipped and installed according to guidelines.



FEATURES lbs Dimensional Tolerance $\pm 3/8"$. Dimensions needed for site preparation should be measured from the unit. Manufacturer assumes no responsibility for preparatory work.

Type and Model #	Material	Wall Finish	Pieces	Drain	Dam/Skirt Height	Net Wt.	Pkg. Wt.
Shower XST6036TR 1.125	Acrylix™ applied acrylic	Smooth tile	1	Center Front	1 1/8 skirt	200	210

DIMENSIONS

Specifications	inches
Width: Ext. / Int.	62 1/4 / 60
Depth: Ext. / Int.	38 1/8 / 36
Height: Ext. / Int.	78 3/4 / 76 5/8
Enclosure Opening:	60
Skirt Height:	1 1/8
Drain Rough-In (from Back Wall)	32 5/8
Drain Rough-In (from Side Wall)	31 1/8

FRAMING DIMENSIONS inches (mm)

Type	D Depth	W Width	H Height	A	B	C
Alcove	38 1/8	62 1/4	-	Box Out	31 1/8	32 5/8

