

XST6034TR COL 1.0 – COMPLIANT SHOWER

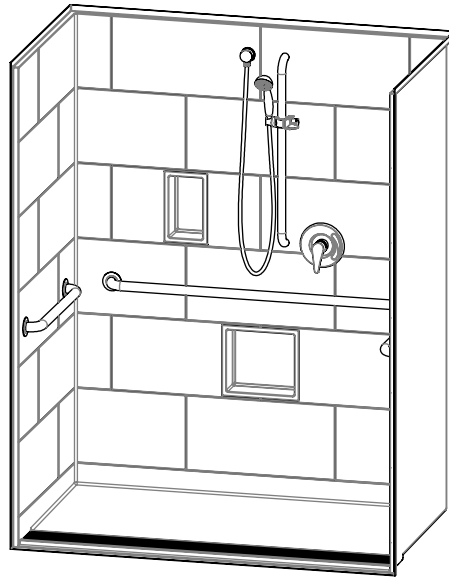
Without Seat

Interior: 60 x 34 x 76 ¾

Exterior: 62 ¼ x 36 ⅛ x 78 ¾

inches

The XST6034TR COL 1.0 roll-in shower features innovative installation design, including an engineered leveled base and improved front threshold with molded integral linear trench drain. A true time and money saver, our pre-leveled base lets you install directly on a **level** floor. And its front threshold is engineered to keep a constant level with the innovative nailing flange.



Shown fully-equipped

COLOR & TRIM OPTIONS

Stock	Upgraded
White	Biscuit Bone

**Additional custom colors available.
(Contact Customer Service)

FEATURES

- Pre-leveled base
- AcrylX™ applied acrylic surface
- 1" COL skirt
- Barrier free when properly installed
- Smooth subway tile wall
- Center front drain outlet
- Integral front trench drain
- 30-year warranty*

* See terms and conditions for details

OPTIONS

- Grab bars
- Hand-held shower assembly with slide bar
- Pressure balancing mixing valve
- Large soap dish
- Small soap dish
- Curtain rod and/or shower curtain, shipped loose
- Tamper-proof grate

CODE COMPLIANCE

- ADA
- FHA
- ICC/ANSI A117.1
- HUD UM73a
- ANSI Z124.1.2
- CAN/CSA-B45-02

**Code compliant when fully equipped and installed according to guidelines.

XST6034TR COL 1.0

Without Seat

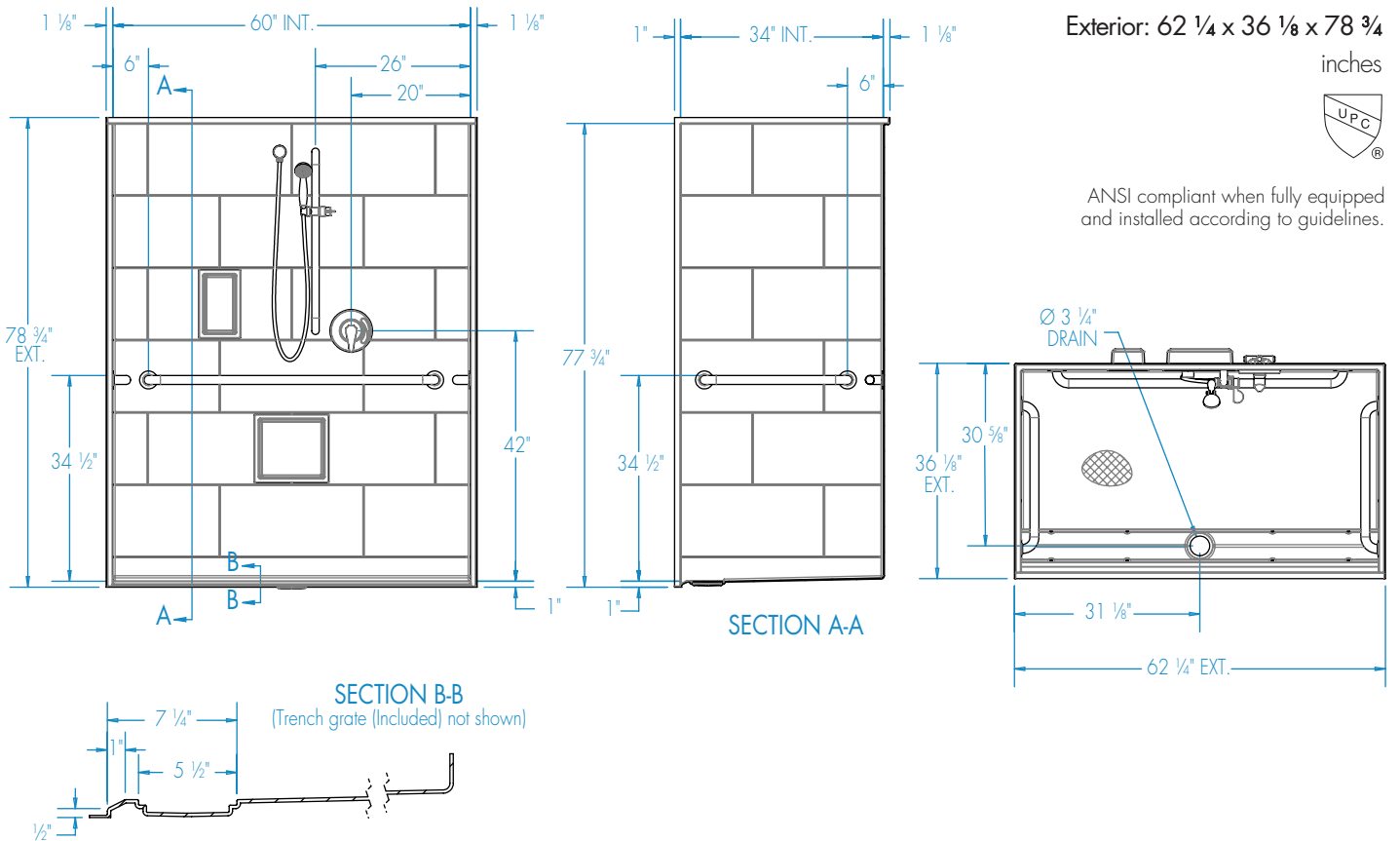
Interior: 60 x 34 x 76 ¾

Exterior: 62 ¼ x 36 ⅛ x 78 ¾

inches



ANSI compliant when fully equipped and installed according to guidelines.



FEATURES lbs Dimensional Tolerance ± ⅜". Dimensions needed for site preparation should be measured from the unit. Manufacturer assumes no responsibility for preparatory work.

Type and Model #	Material	Wall Finish	Pieces	Drain	Dam/Skirt Height	Net Wt.	Pkg. Wt.
Shower XST6034TR COL 1.0	AcrylX™ applied acrylic	Smooth tile	1	Center Front	1" COL skirt	200	210

DIMENSIONS

Specifications	inches
Width: Ext. / Int.	62 ¼ / 60
Depth: Ext. / Int.	36 ⅛ / 34
Height: Ext. / Int.	78 ¾ / 76 ¾
Enclosure Opening:	60
Skirt Height:	1
Drain Rough-In (from Back Wall)	30 ⅝
Drain Rough-In (from Side Wall)	31 ⅛

FRAMING DIMENSIONS inches (mm)

Type	D Depth	W Width	H Height	A	B	C
Alcove	36 ⅛	62 ½	-	Box Out	31 ⅛	30 ⅝

