

XST4836TR COL 1.0 RH RF – COMPLIANT SHOWER

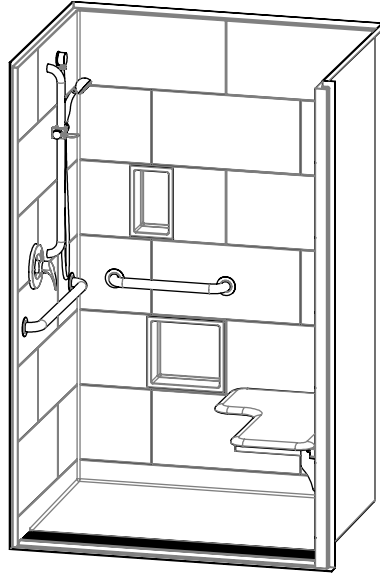
With Seat

Interior: 48 x 36 x 76 ¾

Exterior: 52 1/8 x 38 1/8 x 78 ¾

inches

The XST4836TR COL 1.0 RH RF roll-in shower features innovative installation design, including an engineered leveled base and improved front threshold with molded integral linear trench drain. A true time and money saver, our pre-leveled base lets you install directly on a **level** floor. And its front threshold is engineered to keep a constant level with the innovative nailing flange.



Shown fully-equipped

COLOR & TRIM OPTIONS

Stock	Upgraded
White	Biscuit Bone

**Additional custom colors available.
(Contact Customer Service)

FEATURES

- Pre-leveled base
- AcrylX™ applied acrylic surface
- 1" COL skirt
- Barrier free when properly installed
- Smooth subway tile wall
- Center front drain outlet
- Integral front trench drain
- Right-Side 90 degree return flange for clear floor space
- 30-year warranty*

* See terms and conditions for details

OPTIONS

- Grab bars
- Fold-up seat
- Hand-held shower assembly with slide bar
- Pressure balancing mixing valve
- Large soap dish
- Small soap dish
- Curtain rod and/or shower curtain, shipped loose
- Tamper-proof grate

CODE COMPLIANCE

- FHA
- ICC/ANSI A117.1
- HUD UM73a
- ANSI Z124.1.2
- CAN/CSA-B45-02

**Code compliant when fully equipped and installed according to guidelines.

asura
Trench Drain Collection
by Comfort Designs



XST4836TR COL 1.0 RH RF

With Seat

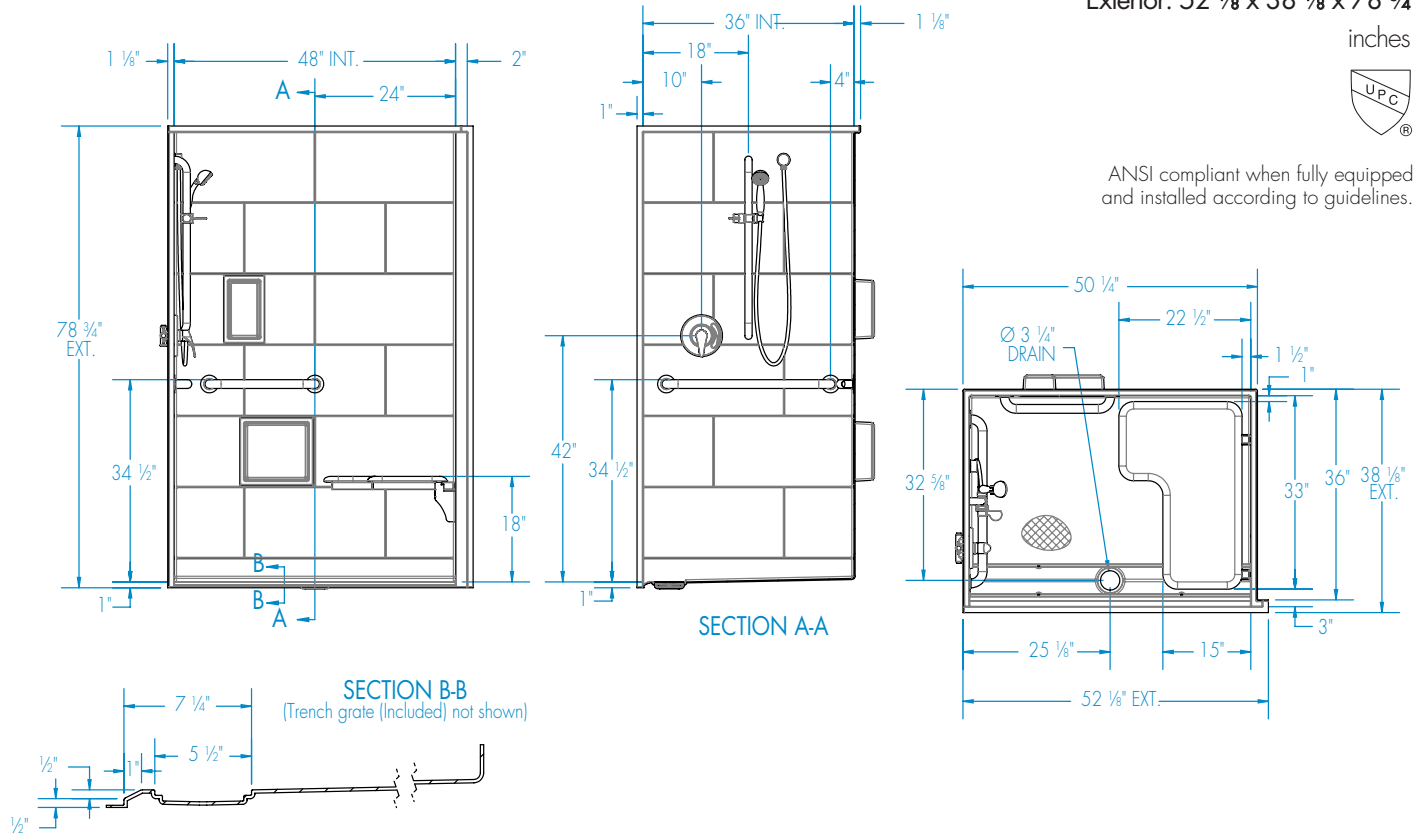
Interior: 48 x 36 x 76 ¾

Exterior: 52 ⅛ x 38 ⅛ x 78 ¾

inches



ANSI compliant when fully equipped and installed according to guidelines.



FEATURES lbs

Dimensional Tolerance ± 3/8". Dimensions needed for site preparation should be measured from the unit. Manufacturer assumes no responsibility for preparatory work.

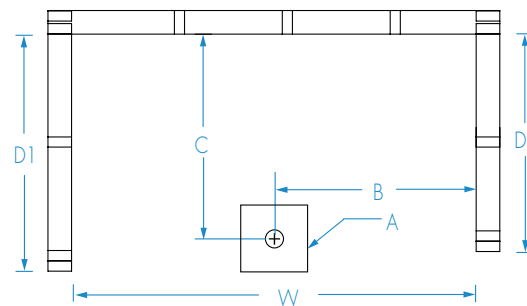
Type and Model #	Material	Wall Finish	Pieces	Drain	Dam/Skirt Height	Net Wt.	Pkg. Wt.
Shower XST4836TR COL 1.0 RH RF	AcrylX™ applied acrylic	Smooth tile	1	Center Front	1" COL skirt	160	170

DIMENSIONS

Specifications	inches
Width: Ext. / Int.	52 ⅛ / 48
Depth: Ext. / Int.	38 ⅛ / 36
Height: Ext. / Int.	78 ¾ / 76 ¾
Enclosure Opening:	48
Skirt Height:	1
Drain Rough-In (from Back Wall)	32 ⅝
Drain Rough-In (from Side Wall)	25 ⅛

FRAMING DIMENSIONS inches

Type	D1 Depth	D2 Depth (RF Side)	W Width	H Height	A	B	C
Alcove	38 ⅛	36	50 ¼	-	Box Out	25 ⅛	32 ⅝



Note: Depth on Return Flange side should only be 36" and opposite side should be 38 ⅛"