



Accessible Showers

OPEN TOP GELCOAT
OR SOLID SURFACE

AQUARIUS
BATHWARE™

G 4248 BF

OD: 45" x 51.6" x 78.25"

Weight: 270

Load Factor: 1.4

Handed By: Valve Wall L/R

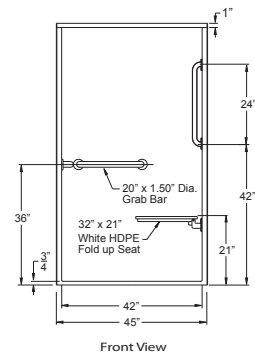
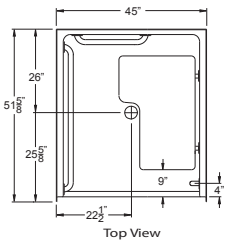
This unit complies with ANSI Z124.2, ASTM F462, ASTM E84, UPC, SBCCI, NAHB.

Warranty: Gelcoat models have a 3 year limited warranty. Acrylic models have a 5 year limited warranty. Pumps, parts, and accessories 1 year limited warranty. For further details please refer to the complete warranty section.

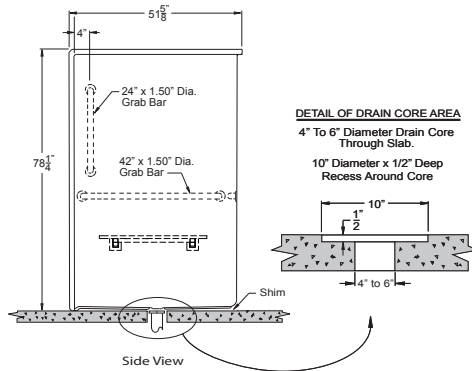
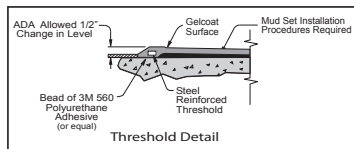
Due to the nature of the materials, dimensions may vary +/- 1/2".



Photograph Illustrates Package One - Handed by Valve Wall Center Unit



NOTE: Due to the nature of the materials, dimension may vary +/- 1/2".



FRAMING DIMENSIONS

A	B	C	D
45 1/4"	51 5/8"	26"	25 5/8"

• Refer to pages 67 & 68 to view corresponding framing detail.

PKG ONE - ACCESSIBLE: G 4248 BF

- 3/4" Recess BF Threshold
- Handed by Valve Wall L/R
- Mudset
- White Polyester Gelcoat Finish

Factory Installed Accessories (Valve not included):

- S-Bar - 20" x 1.5" Smooth SS
- S-Bar - 24" x 1.5" Smooth SS
- S-Bar - 42" x 1.5" Smooth SS
- 32" x 21" White Frameless HDPE Seat
- 1" OD 18 Gauge SS Curtain Rod with Rod Cups

BUILD TO ORDER BASE PLUS ACCESSORIES

BASE UNIT 1: G 4248 BF

- Specify Threshold Height
- Handed by Valve Wall L/R
- Mudset
- Reinforced for Standard Accessories

BASE UNIT OPTIONAL ACCESSORIES

Standard Finish - Polyester Gelcoat:

- White
- Bone
- Biscuit

Premium Finish - CenturyStone™ Solid Surface:

- Solid - White, Bone or Biscuit
- Natural - Granite Finishes

Grab Bars

- S-Bar - 20" x 1.5" Smooth SS
- S-Bar - 20" x 1.25" Smooth White CC
- S-Bar - 20" x 1.25" Peened SS
- S-Bar - 24" x 1.5" Smooth SS
- S-Bar - 24" x 1.25" Smooth White CC
- S-Bar - 24" x 1.25" Peened SS
- S-Bar - 42" x 1.5" Smooth SS
- S-Bar - 42" x 1.25" Smooth White CC
- S-Bar - 42" x 1.25" Peened SS

Standard Seats (Frame Style)

- 32" x 21" White Frameless HDPE Seat
- 34.5" x 21" White Frameless Padded Seat
- 34.5" x 21" Woodgrain Frameless Phenolic Seat

Factory Modifications

- Valve Drilling - Specify Hole Size
- Wood Reinforcement for HUD
- Full Wood Reinforcement
- ArmorShield P3 Protection
- Install 30" Slide Bar / HS Kit
- Install SS Soap Dish - Recessed
- Install Standard Symmons Valve Package
- 1" OD 18 Gauge SS Curtain Rod with Rod Cups
- 1" OD 18 Gauge White Curtain Rod with Rod Cups
- Curtain Rod U-Cup Holder - Pair

Field Installed Accessories (Shipped Loose)

- No Caulk Drain - Chrome
- Curtain - Premium 54" x 72" White Nylon Weighted
- Curtain - Heavy Duty 54" x 72" White Vinyl Weighted

rev. 0415



HDPE (high density polyethylene) seats used by Praxis Companies, LLC contain recycled materials.