

CUSTOMER: _____

JOB NAME: _____

PO #: _____ QUOTE # _____

DATE: _____ QUANTITY: L _____ R _____

SHIP TO: _____

One Signature Required

PLUMBING CONTRACTOR APPROVAL _____ /_____/_____
DATE

GENERAL CONTRACTOR APPROVAL _____ /_____/_____
DATE

ENGINEER APPROVAL _____ /_____/_____
DATE

ARCHITECT APPROVAL _____ /_____/_____
DATE

To complete your order, this document must be signed and emailed to the Centralized Customer Service Center.
quotes@americanbathgroup.com • 800.443.7269

STANDARD FEATURES

- Pre-leveled base
- AcrylX™ applied acrylic surface
- 1" COL skirt
- Compliant when properly installed
- Center front drain outlet
- Integral front trench drain
- Return Flange
- 12" x 24" subway tile
- Slip resistant, textured bottom [ASTM F-462]

| | |
|--------------|--------------------------|
| Int. Dim. | 48 W x 36 D x 76 ¾ H |
| Ext. Dim. | 52 ½ W x 38 ½ D x 78 ¾ H |
| Skirt Ht. | 1" COL skirt |
| Packaged Wt. | 170 lbs. |
| Material | AcrylX™ applied acrylic |
| Warranty | 30-year warranty* |

* See terms and conditions for details

inches

CONFIGURATION (handed by the seat)

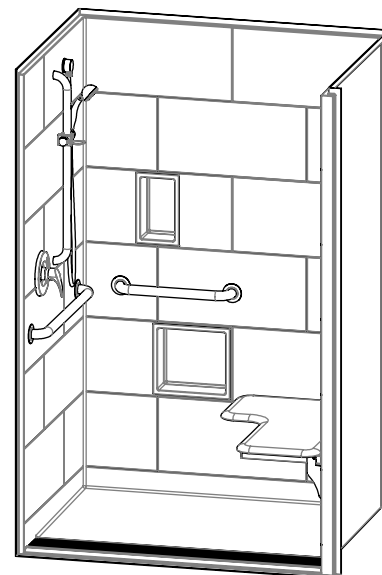
- Shell reinforced for future accessory installation
 - Seat Wall LH RH
 - Optional vertical bar reinforcement (entry wall)
 - LH RH Both
- Fully configured — ANSI
 - Seat Wall (must choose one) LH RH
 - Includes one stainless steel 28" x 1½" grab bar located on the side wall, one stainless steel 18 x 1½" grab bar located on the back wall, stainless steel grate and cushioned, white, L-shaped fold-up seat, per ANSI guidelines. (std config)
 - Factory-installed plumbing options per ANSI requirements
 - Hand-held shower assembly, 30" slide bar and 60" hose
 - Pressure balancing mixing valve

OPTIONAL ACCESSORIES (available for all models)

- Stainless steel vertical bar 24" x 1½" (entry wall)
 - LH RH Both
- Large soap dish (12½ W x 3½ D x 11½ H), shipped loose
- Small soap dish (7 W x 3½ D x 11½ H), shipped loose
- Curtain rod, shipped loose
- Shower curtain, shipped loose
- Brass drain
- Colors:
 - Standard White
 - Upgraded Biscuit Bone
 - Other (contact customer service for custom color options)
- Additional accessories:

CUSTOM OPTIONS (not avail. if ANSI configuration is selected)

- Handed by the seat LH RH
- Reinforced for future seat installation
- L-shaped fold-up seat
 - Cushioned white Phenolic teak Phenolic white
- Grab bars:
 - Horizontal L-shaped bars: 28" (side wall) and 18" (back wall)
 - Vertical bar 24" (entry wall) LH RH Both
- Grab Bar finish:
 - Stainless steel (1½" dia.)
 - Powder-coated white (1¼" dia.)
- Factory-installed plumbing options per ANSI requirements
 - Hand-held shower assembly, 30" slide bar and 60" hose
 - Pressure balancing mixing valve
- Grate:
 - Stainless steel
 - White



shown with optional soap dish

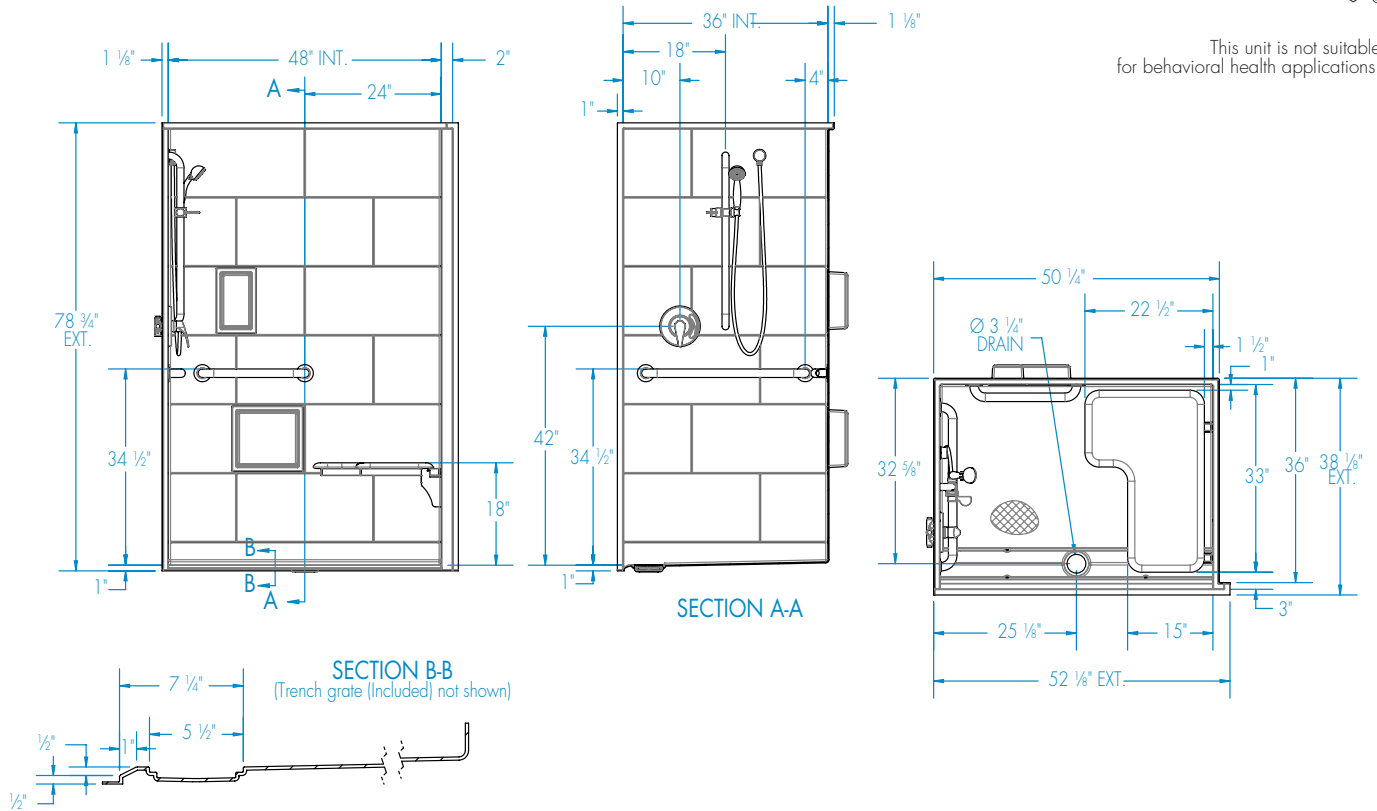
This unit is not suitable for behavioral health applications.



ANSI compliant when fully equipped and installed according to guidelines.



This unit is not suitable for behavioral health applications.



FEATURES lbs Dimensional Tolerance $\pm \frac{3}{8}$ ". Dimensions needed for site preparation should be measured from the unit. Manufacturer assumes no responsibility for preparatory work.

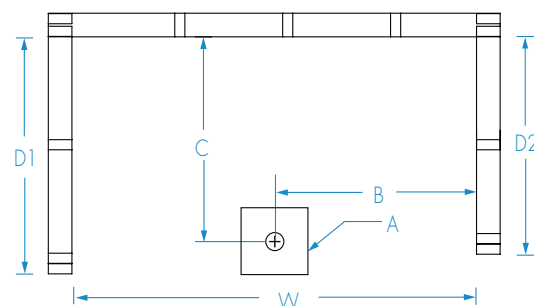
| Type and Model # | Material | Wall Finish | Pieces | Drain | Dam/Skirt Height | Net Wt. | Pkg. Wt. |
|--------------------------------|--------------------------|-------------|--------|--------------|------------------|---------|----------|
| Shower XST4836TR COL 1.0 RH RF | AcrylXTM applied acrylic | Smooth tile | 1 | Center Front | 1" COL skirt | 160 | 170 |

DIMENSIONS

| Specifications | inches |
|---------------------------------|-------------------|
| Width: Ext. / Int. | 52 1/8" / 48" |
| Depth: Ext. / Int. | 38 1/8" / 36" |
| Height: Ext. / Int. | 78 3/4" / 76 3/4" |
| Enclosure Opening: | 48" |
| Skirt Height: | 1" |
| Drain Rough-In (from Back Wall) | 32 5/8" |
| Drain Rough-In (from Side Wall) | 25 1/8" |

FRAMING DIMENSIONS inches

| Type | D1 Depth | D2 Depth (RF Side) | W Width | H Height | A | B | C |
|--------|-------------|-----------------------|------------|-------------|---------|---------|---------|
| Alcove | 38 1/8" | 36" | 50 1/2" | - | Box Out | 25 1/8" | 32 5/8" |



Note: Depth on Return Flange side should only be 36" and opposite side should be 38 1/8"

EMAIL TO THE CENTRALIZED CUSTOMER SERVICE CENTER: quotes@americanbathgroup.com